



New application improves human reliability by identifying safe operating limits

inBound™ from PAS improves vigilance of plant safe operating limits and exposes process safety risks

Houston, TX - February 16, 2012 - PAS, a leading supplier of human reliability software and services to the power and processing industries worldwide, today announced the release of inBound, an application that makes plant operators continually aware of safe operating limits.

Safe operating limit information is maintained by various groups within the plant and is not readily available to operators. As such operators are generally unaware of the design and safety limitations of the processes they operate. PAS has addressed this shortcoming with inBound, a layered application for PAS' market-leading PlantState Suite© alarm management software.

InBound aggregates, validates, and displays physical constraints such as a vessel's Maximum Allowable Working Pressure (MAWP), design constraints such as relief valve settings, and safe operating limits. These constraints may be manually entered, calculated, or imported into the software from engineering applications and databases.

The application enables engineers to develop a boundary hierarchy and automatically detects and reports deviations from that hierarchy, such as an alarm setting that is higher than a pressure-relief valve setting. This capability provides assurance that configuration parameter changes such as alarm limits and instrument ranges remain within the safe operating envelope of the plant.

By displaying safe operating limits in real time and in context within the plant's existing control system graphics, inBound enables operators to proactively monitor measurements and take action as needed to prevent violation of limits. "A compelling use for inBound is the monitoring of environmental limits," said Eddie Habibi, Founder and CEO of PAS. "Exposing these limits in context enables operators to visualize the process's proximity to boundaries in real time, and take action before an excursion occurs".

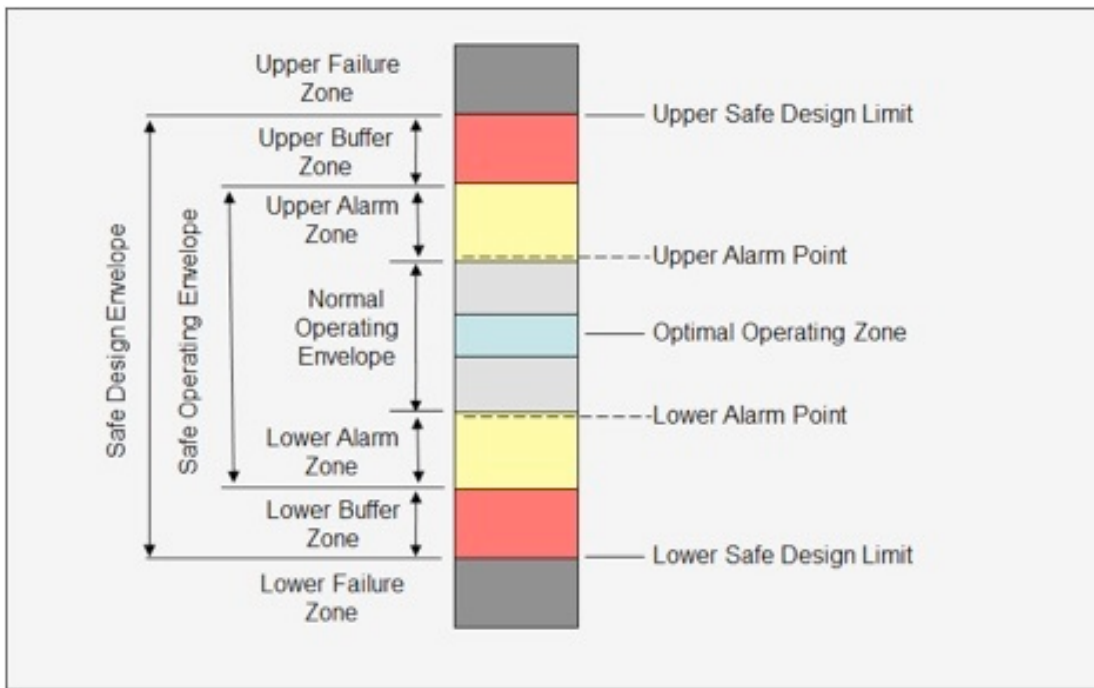


Fig. 1 Example of Boundary Hierarchy

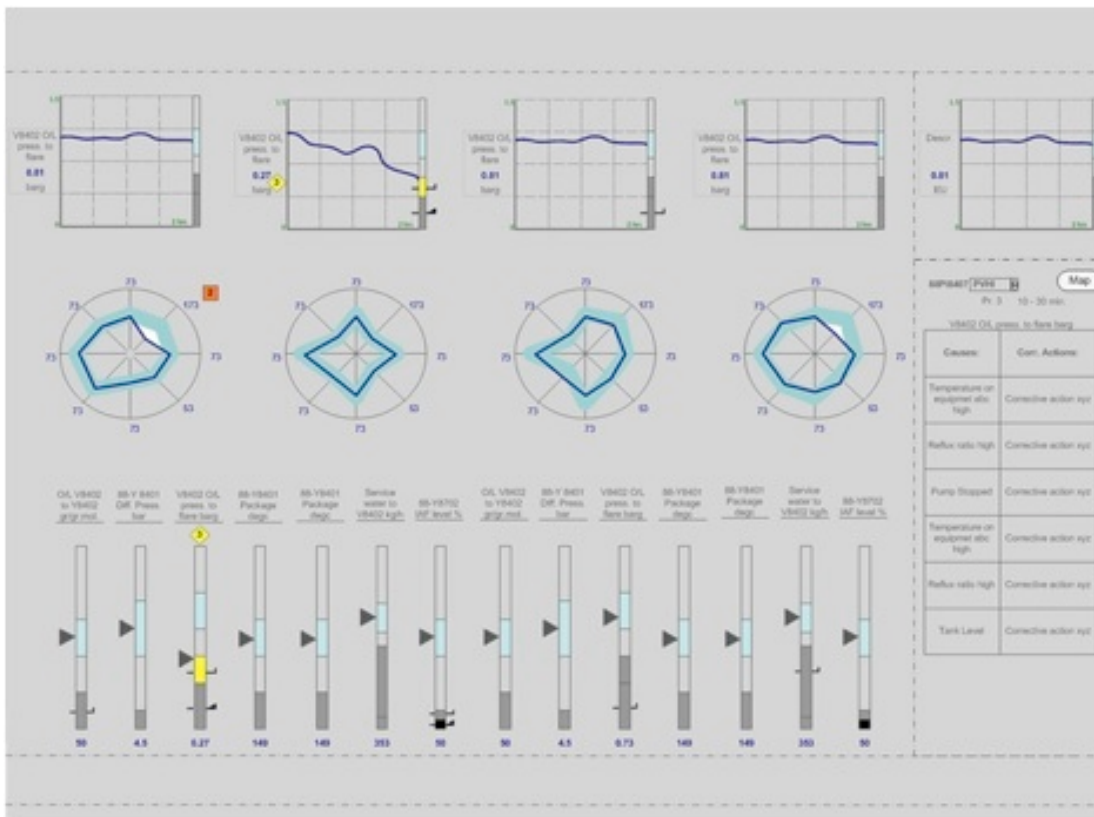


Fig. 2 Example of an inBound operating graphic display

**About PAS**

PAS (www.pas.com) improves human reliability in power and process plants worldwide to enhance plant safety, compliance and profitability. We make essential information easily available, in context, and actionable by linking people, systems, and physical assets. Our comprehensive portfolio includes solutions for Alarm Management, Automation Genome Mapping, Automation System Management of Change, Control Loop Performance Optimization, and High-Performance Human-Machine Interfaces. PAS solutions are installed in over 1000 industrial plants worldwide.

Notes to editor

PAS press releases can be downloaded as a Word document or a printable pdf including graphics at the following URL, with low resolution screenshots in JPEG format. High resolution images are available upon request from the press contact below:

<http://goo.gl/8diJi>

Press contact:

Robin Wolstenholme, bcm public relations (Worldwide)

Tel: +44 (0)1306 882288

Email: r.wolstenholme@bcmpublicrelations.com